

ORMISTON
BOLINGBROKE

TH
FORM



PROVISIONAL PROSPECTUS FOR 2025

[OAT]
Ormiston Academies Trust
AN OAT ACADEMY

Welcome

Welcome to Ormiston Bolingbroke Academy Sixth Form prospectus. At Ormiston Bolingbroke Academy (OBA) we offer fantastic opportunities for you to gain the qualifications you need to be successful.

Our talented, hardworking and committed staff provide individual care and attention while also challenging you to achieve your goals. The Sixth Form offers a wide range of pathways, from A-Levels to blended routes to vocational qualifications which suit the ability and interests of all students.

At OBA everyone is valued; students work hard but also make the most of the enrichment opportunities on offer to develop them as well-rounded young adults ready to face their future with confidence.

We want to ensure that our students can go to university or can enter the world of work with a choice of career pathways ahead of them. While many of our Year 11 students return to us in Sixth Form, we welcome students from all schools across the borough.

I am very proud to be the Principal of OBA. I believe that the opportunities and unique pastoral support available are very special and can transform lives in our community. Come and see our facilities and find out how OBA can support you through the next stage of your education. I look forward to meeting you at one of our open events.



Kathryn Evans
Principal



As the Head of Sixth Form at Ormiston Bolingbroke Academy, I would like to thank you for showing an interest in our Sixth Form. OBA is a school that is kind and caring, with a student's wellbeing at the centre of everything that the Sixth Form team and I do.

At OBA Sixth Form we have very high expectations for everyone in our Sixth Form community. The curriculum that we have designed is selective and leans on the many specialisms that this Academy can provide. We currently have three Pathways which are all on our Level 3 provision enabling us to meet many students' requirements for further education. We know the abilities of our students and support this with many different opportunities including ensuring our more able students have the opportunity to get involved in many prestigious programmes and qualifications, including our OBA Scholars Programme.

The Academy aims to provide a wide range of educational opportunities that can lead to students living happy and successful lives. A high proportion of our own students continue into our Sixth Form; they are then joined by many students from other schools and colleges, together comprising of the largest and only Sixth Form provision within a school setting in the local area.

To support students in fulfilling their academic potential, we offer a high quality of pastoral care that is organised by the Sixth Form team. With this team there lies a vast amount of knowledge and experience of making successful applications to university, employment and for varying apprenticeships, as well as supporting students with the many challenges they may face throughout their Sixth Form career.

I encourage you to browse through this prospectus and find out information about the qualifications we have on offer for you at OBA.



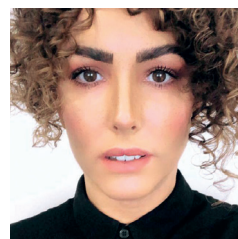
Scott Fenner
Assistant Principal
Head of Sixth Form



Claire Platt
KS5 Lead Practitioner
for T&L



Mrs S Cotteril
Sixth Form
Attendance Officer



Hannah Collier
Sixth Form Student Support
and SEN

PROVISIONAL PATHWAYS 2025



Contents

Subject	Page
Animal Care Extended Certificate	6
Biology – A-Level	7
Business Studies – A-Level	8
Chemistry – A-Level	9
Creative Digital Media Production Extended Certificate	10
English Language – A-Level	11
English Literature – A-Level	12
Fine Art – A-Level	13
Geography – A-Level	14
Graphic Communication – A-Level	15
History – A-Level	16
Mathematics - A-Level	17
Performing Arts Extended Certificate	18
Photography – A-Level	19
Physics – A-Level	20
Sports Studies Extended Certificate	21
Edexcel Functional Skills Level 2 English	22
GCSE English Language	23
Edexcel Functional Skills Level 2 Mathematics	24
GCSE Mathematics	25



Animal Care Subsidiary Diploma

Equivalent in size to one A-Level. Consists of seven units one of which is mandatory and none are externally assessed.

Core units

Unit 1: Understand and Promote Animal Health (10 Credits)

Learning about animal health is an interesting and important subject for anyone thinking of working in the animal care industry. Whatever animals are used for, their health has to be optimum for them to fulfill their purpose, whether as a pet, a working animal or an animal kept in a collection such as a zoo.

Optional units

Unit 4: Undertake Animal Handling and Safe Working (10 Credits)

Animal handling skills are essential for working with animals. You will learn how to handle animals safely according to industry guidelines and health and safety legislation.

Unit 5: Plan and Monitor Animal Feeding (5 Credits)

Feeding animals is a vital husbandry skill when caring for all types of animals. You will learn how to provide food to animals safely, following animal welfare and health and safety requirements, and to plan and monitor animal feeding regimes.

Unit 6: Manage Animal Accommodation (5 Credits)

Planning for and maintaining an animal's accommodation is a vital part of their general care. You will learn how to plan and maintain accommodation, including the theory behind what should make up the accommodation and how it complies with relevant animal welfare legislation.

Unit 13: Understand and Interpret Animal Behaviour and Communication (10 Credits)

You will learn and understand both normal and abnormal behaviour and the triggering factors of a number of species, in order to care for animals properly.

Unit 18: Understand the Principles of Exotic Animal Health (10 credits)

You will learn about the husbandry and management of exotic animals in captivity. The unit covers health, welfare, handling, restraint, nutrition and feeding..

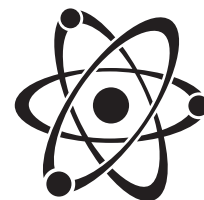
Unit 29: Undertake Animal Training (10 Credits)

In this unit you will learn how to train a selected animal. You will plan a training programme for your chosen animal, carry it out and report on the results.

Career/real world

This qualification is designed primarily to support progression to employment. Students completing this size qualification could access entry roles in areas such as:

- Kennel or cattery assistant.
- Animal care assistant, in an animal business, charity or wildlife trust.
- Retail assistant, in a pet or animal-related retail establishment.
- Assistant to an animal trainer, e.g. trainer of assistance dogs for the disabled.
- Animal technician, in an animal centre.



A-Level Biology

Have you ever wondered why you look similar to your brother/sister? Do you understand how the medicines you take affect your body? Do clones really exist? Studying A-Level Biology will answer all your questions and encourage you to question the world around you!

Biology is the fascinating, practical study of life that will allow you to explore the complexity of living organisms from the anatomical structure of the kidney, liver and the brain to the advances in genetic engineering, control of disease and the biochemistry behind biological molecules. This highly practical course will allow you to build on your GCSE studies of both science and mathematics to further develop your investigative, analytical and evaluative skills and solve problems in a range of contexts.

What will I study?

Year 1	Year 2
Cell Structure	Anatomy (Lives, Kidneys, Muscles)
Biological Molecules	Neurones/Hormones
Membrane Structure and Function	Biochemistry (Photosynthesis/Respiration)
Cell Division	Genetics
Exchange and Transport (Plants and Animals)	Ecosystems
The Immune System	Conservation
Biodiversity/Evolution	Statistics

Assessment

Biology A-Level is a fully linear course so assessment of knowledge and understanding of the whole course takes place at the end of two years of study. There will be a total of three exams totaling six hours of examinations and a minimum series of 12 practical sessions that must be covered and evidenced in lab books to gain the practical endorsement that sits alongside the A-Level. You will have the chance to work with lots of new laboratory equipment including; water baths, colorimeters, incubators, dissection kits and field study apparatus to strengthen a range of different practical skills.

Vocational opportunities/work experience

As with all other science A-Levels, we give students a chance to work alongside professional scientists, technologists, engineers and mathematicians for 4 – 6 weeks over the summer break through the Nuffield Scheme (subject to acceptance of application).

Career/real world

Biology A-Level will prove essential if you are considering applying to any healthcare-based university degree including; medicine, nursing, midwifery, dentistry, biomedical science, microbiology, forensic science, veterinary science, physiotherapy or even the police force. It can also complement sports science, psychology, sociology and many more!

Biology A-Level can open up a range of career opportunities from biological research, medical, environmental, forensics, sports and science communication. But the problem-solving skills you gain along the way will also be transferable to other areas such as law.



A-Level Business Studies

This A-Level takes a real-life approach to business, analysing how the theory applies to current business stories locally, nationally and internationally. The course examines the interrelated nature of business using business models, theories and techniques to show how businesses plan for success and prepare for uncertainty.

The analysis and evaluation skills taught in this course means it is suitable to go alongside most other qualifications and provides excellent opportunities for UCAS points or entry to apprenticeships.

Input from real businesses and opportunities to visit university campuses including lectured style teaching are key to this course, bringing the academic theory of business to life. As a part of this qualification there will be an annual trip abroad to experience first-hand business in the real world.

At a glance

Theme 1 – Marketing and People

- Meeting customer needs, the market, marketing mix and strategy, managing people, entrepreneurs and leaders.

Theme 2 – Managing Business Activities

- Raising finance, financial planning, managing finance, resource management, external influences.

Theme 3 – Business Decisions and Strategy

- Business objectives and strategy, business growth, decision-making techniques, influences on business decisions, assessing competitiveness, managing change.

Theme 4 – Global Business

- Globalisation, global markets and business expansion, global marketing, global industries and companies (multinational corporations).

You will have 4-5 lessons a week for Business. As a part of this qualification there will be opportunity to experience first-hand Business in the real world through trips, business links and university connections.

How will I be assessed?

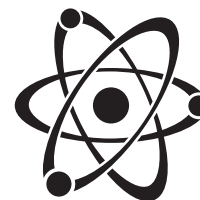
Three written papers of two hours each at the end of the two-year course. Paper 1 is worth 35%, Paper 2 is worth 35%, Paper 3, which draws on a pre-released research theme, is worth 30%.

Career/real world

Students who study Business can continue to study many areas at university or gain employment in the following areas:

- Accountancy.
- Advertising.
- Banking, investment and financial services.
- HR/personnel.
- Management consultancy.
- Retail management.

If you have any further questions please make sure that you are following our Instagram Page **@oba_ICT_CS** or contact **a.hook@ob-ac.co.uk**.



A-Level Chemistry

Have you ever questioned why ice is a solid, yet can still float? Or the mechanism of action behind pain killers?

Chemistry is a highly practical subject which will give you an insight into many chemical concepts. You will learn about chemistry in a range of different contexts, including the role it plays within industry and numerous aspects of everyday life. This course will challenge you to bring together your scientific and mathematical skills from GCSE level and apply them to new concepts.

What will I study?

Year 1	Year 2
Atoms, Compounds, Molecules and Equations	pH and Buffers
Acid-base and Redox Reactions	Enthalpy, Entropy and Free Energy
Electrons, Bonding and Structure	Redox and Electrode Potentials
The Periodic Table	Transition Elements
Enthalpy Changes	Polymers
Rates of Reaction and Equilibrium	Chromatography and Spectroscopy
Organic Chemistry	Quantifying Rates of Reaction

Assessment

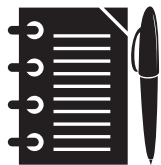
New A-Levels will be fully linear so assessment of knowledge and understanding of the whole course takes place at the end of two years of study. There will be a total of three exams and a series of 12 practical groups that must be covered and evidenced in your laboratory books to gain the practical endorsement that sits alongside the A-Level. The practical endorsement for chemistry is a teacher assessed pass/fail component and performance is reported separately to the A-Level grade.

Vocational opportunities/work experience

As with all other science A-Levels, we give students a chance to work alongside professional scientists, technologists, engineers and mathematicians for 4 – 6 weeks over the summer break through the Nuffield Scheme (subject to acceptance of application).

Career/real world

Chemistry A-Level will prove useful if progressing on to medicine, pharmaceuticals, industry work, environmental science, mathematics, dentistry, nursing, forensics, engineering and many more! Chemistry is also considered for many law applications as it shows you can cope with difficult concepts.



Creative Digital Media Production Extended Certificate

The course is made up of four units.

Unit 1: Media Representations: You will study a range of media from different sectors: music videos, short film extracts, animation, news programmes, websites, digital games and print adverts. You will be able to explore how meaning, messages and values are constructed through formal and stylistic elements. This is an examined unit of work.

Unit 4: Pre-Production Portfolio: You will produce a digital media product. You will create a portfolio and manage the pre-production for your own creative media production. This is an exciting opportunity to be creative and explore what it would be like to work in the profession! (Portfolio unit)

Unit 8: Responding to a Commission: You will understand how to respond to a commission brief with ideas based on the required content, style, audience, purpose, and approach proposed by the client. You will work within the requirements and constraints of the client's specifications and consider your response in terms of ethos, format, budget, platform, and duration. (Examined unit - with pre-release brief).

Unit 14: Digital Magazine Production: You will explore codes and conventions of different magazine genres and platforms. You will select and prepare content and create layouts for a specific genre of magazine. (Assignment portfolio unit).

- Equivalent in size to one A-Level.
- Four units of which two are mandatory and two are external.
- Mandatory content (83%).
- External assessment (58%).

Career/real world

This qualification provides both academic and employment opportunities. You could study the following courses:

- BA (Hons) Media Studies, BA (Hons) Computer Animation, BA (Hons) Media Production, BA (Hons) Digital Television Production.

It would provide a significant advantage when applying for entry level roles in the industry such as a runner or production assistant within a television or film production company, or as a games tester in games company, or to apprenticeships in 2D visual effects or digital content.

- BSc (Hons) Broadcast Audio Technology.



A-Level English Language

In studying A-Level English Language, learners will develop a deep knowledge of how the English language works and a secure understanding of the language system. Pupils will study a wide variety of texts, both written and spoken as well as texts from across different time periods to consider how language is used, how it has changed and is currently changing. Students will engage with specialised language terminology, concepts and theories and be expected to apply their knowledge in both their analysis of language and their creative writing.

Units

- Introduction to Language Levels. This means studying the different layers of language and how meaning is created. Areas of study include: lexis, semantics, grammar (including morphology), pragmatics and discourse.
- Introduction to Spoken Language. This includes studying phonetics, phonology and prosodics. You will study how conversations work and how people use sound as well as words to create meaning.
- Language and Gender. This unit examines how men and women communicate and investigates how far a person's gender impacts their language choices.
- Language and Power. This unit explores how language is used to assert power of others. Texts you will study include political speeches, official documents, advice leaflets, interview transcripts and debates.
- Language and Technology. In studying this unit, you will explore the impact of technology on language through examining platforms such as texting, email, the internet and social media.
- Language in the Media. For this topic pupils will analyse a range of media texts from newspaper and magazine articles to advertisements both in print and televised.
- Language Change. Students will study how the English language has changed over the last 400 years. They will study the history of the English language and world events that have helped to shape the language we use today.
- Child Language Acquisition. For this unit, pupils will study how children learn language from the age of 0 to 5. Students will study key child language acquisition theories and apply these theories to examples of children's language.

How is this course assessed?

- Examination 1: Exploring Language (2 hours 30 minutes) worth 40% of A-Level.
- Examination 2: Dimensions of Linguistic Variation (2 hours 30 minutes) worth 40% of A-Level.
- Coursework: Independent Language Research worth 20% of A-Level.

Career/real world

English Language A-Level will leave you with excellent analytical skills. This ability to think critically will be useful for a wide range of University courses. The study of English language could lead to careers in areas such as law, journalism, teaching, social work, advertising and marketing to name a few.



A-Level English Literature

The A-Level in English Literature qualification will build on the knowledge, understanding and skills established at GCSE, introducing learners to advanced literary studies, and requires reading of all the major literary genres of poetry, prose and drama. The A-Level qualification will further develop learners' ability to analyse, evaluate and make connections across texts. Learners will consider how writers shape meaning, the ways in which texts are interpreted by different readers and the significance of cultural and contextual influences on readers and writers.

Units

- Drama and poetry pre-1900. Texts studied for this unit:
 - 'Hamlet' by William Shakespeare.
 - 'A Doll's House' by Henrik Ibsen.
 - 'Selected Poems' by Christina Rossetti.
- Comparative and contextual study. For this unit pupils will study the dystopian genre. As well as looking at a number of extracts from this genre, pupils will study in close detail the following texts:
 - 'The Handmaid's Tale' by Margaret Atwood.
 - 'Fahrenheit 451' by Ray Bradbury.
- Literature post-1900. Pupils will study the following texts with the central theme of 'war':
 - 'War Horse' by Nick Stafford.
 - 'Birdsong' by Sebastian Faulks.
 - 'Selected Poems' by Wilfred Owen.

How is the course assessed?

- Examination 1: Drama and poetry pre-1900 (2 hours 30 minutes) worth 40%.
- Examination 2: Comparative and contextual study (2 hours 30 minutes) worth 40%.
- Coursework: One piece of close analysis and one comparative essay worth 20%.

Career/real world

English Literature A-Level is viewed very favourably by universities and is a subject that will give you excellent analytical skills which will be useful for any degree course. English literature A-Level can also lead to careers in the following areas: law, journalism, advertising, teaching, writing and politics.



A-Level Fine Art

How will I be assessed?

Students are assessed at the end of the two years through an examination which accounts for 40% of the qualification and a 60% coursework unit based on a personal investigation study of the student's own choosing.

How it is assessed

Component 1: A portfolio that in total shows explicit coverage of the four assessment objectives. It must include a sustained project evidencing the journey from initial engagement to the realisation of intentions and a selection of further work undertaken during the student's course of study.

Component 2: Students respond to their chosen starting point from an externally set assignment paper relating to their subject title, evidencing coverage of all four assessment objectives. This extended creative response must explicitly evidence students' ability to draw together different areas of knowledge, skill and understanding from an initial selected starting point through to their realisation of intentions in the 15 hours of supervised time.

- 96 marks for both components.
- 60% of GCE.

Non-exam assessment (NEA) set and marked by the school/college and moderated by AQA during a visit. Moderation will normally take place in June. Students who study fine art can continue to study art at university. An example of just some of the careers within the art and design industry are artists, designers, web design, gallery curator, art educator, teacher.





A-Level Geography

A two-year course designed to develop encourage you to engage in contemporary issues that support progression to undergraduate level.

Why should I choose Geography?

We live in a world of amazing beauty, infinite complexity and rigorous challenge. Geography is the subject which opens the door to this dynamic world and prepares each one of us for the role of global citizen in the 21st century. Through studying geography, people of all ages begin to appreciate how places and landscapes are formed, how people and environments interact, what consequences arise from our everyday decisions, and what a diverse range of cultures and societies exist and interconnect. Geography is a subject which builds on young people's own experiences, helping them to formulate questions, develop their intellectual skills and find answers to issues affecting their lives. It ensures that they appreciate the complexity of attitudes and values which shape the way we use and misuse the environment. Through geography, people learn to value and care for the planet and all its inhabitants. Aspects such as geology, coastal planning, environmental studies and much more.

Course Overview

Paper 1 Marks: 105 Weighting 30% of A-Level Time 2 hours 15 minutes	Section A: Tectonic Processes and Hazards Students answer all questions from section A
	Section B: Glaciated Landscapes and Change or Coastal Landscapes and Change Students answer either Q2 or Q3, and answer all questions in either section.
	Section C: Physical Systems and Sustainability Students answer all questions from section C
Paper 2 Marks: 105 Weighting 30% of A-Level Time: 2 hours 15 minutes	Section A: Globalisation/Superpowers Students answer all questions from section A
	Section B: Shaping Places: Regenerating Places or Diverse Places Students answer either Q3 or Q4, and answer all questions in either section.
	Section C: Global Development and Connections: Health, Human Rights and Intervention or Migration, Identity and Sovereignty Students answer either Q5 or Q6, and answer all questions in either section.
Paper 3: Synoptic Investigation Marks: 70 Weighting 20% of A-Level Time: 2 hours 15 minutes including 15 minutes reading time)	The synoptic investigation will be based on a geographical issue with a place-based context that links to three synoptic themes (Players, Attitudes and actions, and Futures and uncertainties) and is rooted in two or more of the compulsory content areas. Students answer all questions.
Paper 4: Independent Investigation (Coursework) Marks: 70 Weighting 20% of A-Level	The piece of work must be submitted by the deadline date stated on the Pearson website and be accompanied by the required form in Appendix 5. It must include fieldwork skills from those listed in Appendix 2 of the A-Level specification.

Career/real world

Geography is an academically robust subject, due to it spanning both the physical and social sciences. Geography is part of the academic group of English Baccalaureate GCSE subjects and the Russell Group of universities has recognised A-Level Geography as one of their preferred 'facilitating subjects' - supporting an application into a wide range of undergraduate courses. The knowledge and transferable skills that geographers gain from their degree studies are highly relevant to the workplace; levels of geography graduate unemployment are extremely low. You will find geographers working in every sector of the economy including finance, local businesses, not-for-profit organisations, significant research or as key decision makers in local and national government, highlighting the range of possibilities for geographers.



A-Level Graphic Communication

Learners explore relevant images, artifacts and resources relating to a range of graphic communication. These will form an integral part of the investigating and making process. Responses to these examples will be shown through practical and critical activities which demonstrate the candidates' understanding of different styles, genres and traditions.

What will I study?

Year 1: A-Level prep

Unit 1: Portfolio: You will be given the opportunity to explore and experiment with a range of graphic design media techniques and processes, including software training in response to several different starting points and contextual references, before focusing on an extended project.

Unit 2: Externally Set Assignment (mock): You will receive a question paper consisting of five exciting starting points. You will research and develop ideas and produce a final outcome in response to one of the five questions.

Year 2: A-Level

Unit 3: Personal Investigation: You are required to develop a response to a personal idea, issue, concern, concept or theme. The visual research, development and final outcome must be supported by an assignment of 1000-3000 words.

Unit 4: Externally Set Assignment: You will receive a question paper consisting of eight exciting starting points. You will research and develop ideas in response to one of the eight questions.

How will I be assessed?

Year 1 consists of the unit 1 portfolio which provides 50% of the overall Year 1 grade, and unit 2: 10-hour controlled assessment giving 50% of the final grade.

Year 2 consists of unit 3 which provides 50% of the overall Year 2 grade and unit 4: 15 hour controlled assessment giving 50% of the final grade. Each controlled assessment takes place in the spring term with a month long preparation time.

Career/real world

A graphic design degree expands your options to include a diverse palette of creative careers that can extend to leadership positions in highly creative organizations like advertising agencies and industrial design firms.

- Art director.
- Creative director.
- Drafter (architecture and engineering).
- Film and video editor.
- Graphic designer.



A-Level History

Throughout both A-Level years within history, students will build on their understanding of the past through experiencing a broad and balanced course of study. They will acquire an understanding of different identities within society and an appreciation of aspects such as social, cultural, religious and ethnic diversity.

The students study a range of historical topics and issues throughout four units, developing their ability to analyse sources, historian interpretations and evidence to evaluate judgements and concepts. The units focus upon revolution and change in society, with the coursework element of the course also focusing on revolution in Europe.

History allows the students to develop their knowledge and skills, while promoting and developing more independent learners. It is a course that gets students ready for their next steps in life; be it university or careers.

Units

Unit 1: Britain, 1625–1701: Conflict, Revolution and Settlement (worth 30%): This unit focuses on the challenges to monarchical power that influenced not only the English, but also the French and American Revolutions, by studying the relationship between king and parliament during the Stuart period.

Unit 2: Russia in Revolution, 1894–1924 (worth 20%): This unit focuses on the end of the Romanov dynasty and how the first Communist State came into being. Students will learn about challenging concepts and ideologies that eventually influenced modern world history.

Unit 3: Civil Rights and Race Relations in the USA, 1850– 2009 (worth 30%): This unit focuses on the changing status of African Americans and the role of the state in amending legislation in regards to civil rights, from Lincoln to Obama.

Unit 4: Coursework – Russian Revolution (worth 20%): This is an independent study where students investigate the causes of the Russian Revolution (1917).

Career/real world

Careers: historians, authors, journalists, archaeologists, politics, teaching, law, business.

University: history, classics, ancient civilisations, archaeology, history and politics, history and philosophy, history and English.



A-Level Mathematics

The course

Mathematics is a challenging subject which stimulates our curiosity and enables us to make sense of the world. Mathematics is vitally important to the economic well-being of our society through its widespread application to science, technology, business and finance. It is one of the most highly valued subjects offered at A-Level for both universities and future employers as it demonstrates that you have enhanced your reasoning and problem solving skills. A-Level Mathematics fits well with almost any combination of subjects, particularly the sciences, business, economics, IT and computing, and offers wide progression opportunities to university or vocational careers. Those with A-Level Mathematics earn on average around 10% more than those without (around £240,000 over an average lifetime).

Paper 1 and 2: Pure Mathematics 66 $\frac{2}{3}$ %

- Proof: construct proofs using mathematical methods.
- Algebra and Functions: consider graphs as functions of a given variable.
- Coordinate Geometry in the (x, y) Plane: study lines and circles.
- Sequences and Series: geometric, arithmetic and periodic sequences.
- Trigonometry: extended use of the sin, cosine and tangent functions.
- Exponentials and Logarithms: graph and model real-world scenarios using exponential and logarithms.
- Differentiation: consider rates of change between two variables.
- Integration: calculate the area under curves and more.
- Numerical Methods: finding the roots of functions using iterative methods.
- Vectors: extend your knowledge of vectors into the third dimension.

Paper 3: Statistics and Mechanics 33 $\frac{1}{3}$ %

Section A: Statistics

- Statistical Sampling: how to take samples and remove bias.
- Data Presentation and Interpretation: histograms and data analysis.
- Probability: possible outcomes and their likelihood of occurring.
- Statistical Distributions: the binomial and normal distributions.
- Statistical Hypothesis Testing: accepting or rejecting a given hypothesis.

Section B: Mechanics

- Quantities and Units in Mechanics.
- Kinematics: the motion of objects in one or two dimensions.
- Forces and Newton's laws: the fundamental rules that govern how objects move through space.
- Moments: consider the turning effects the turning effects produced by forces.

How will I be assessed?

All assessment is done by written exam at the end of the two-year course. The examination are a combination of both pure and applied elements of the course.

Career/real world

Mathematics is the language of nature. Behind all modern marvels such as space travel, smart phones and data analysis lies complex mathematical processes. For those interested in mathematics, applied science, engineering or computer science (to name but a few!) A-Level mathematics is a must.



Performing Arts Extended Certificate

Are you passionate about **music**, **dance**, or **drama**? Perhaps all three? This dynamic **Performing Arts course** gives you the freedom to focus on your **individual creative journey** while collaborating with like-minded artists. Whether you're a **musician**, a **dancer**, or an **actor**, this course allows you to **hone your craft**, explore new possibilities, and refine your skills in an immersive, professional environment. Musicians and dancers, don't be put off by it being performing arts! This course is for you too!

At our **state-of-the-art facilities**, you'll have access to: two fully equipped theatre spaces, two dedicated music classrooms, a professional-grade recording studio with industry-standard equipment and a specialized dance studio

Your Pathway, Your Future

This course offers two exciting routes to match your ambitions:

1. Performing & Creating Pathway

Ideal for those driven to create and perform, whether on stage, in front of the camera, or behind the microphone. Career opportunities include:

- Actor/Presenter/Entertainer/Comedian/Acting Teacher
- Choreographer/Dancer/Dance Teacher
- Musical Theatre Performer/Singer/Songwriter/Recording Artist/Musical Theatre Teacher

2. Business & Production Pathway

Designed for those passionate about the industry's behind-the-scenes roles—perfect for creators, producers, and innovators shaping the performing arts world. Careers include:

- Promotion/Management/Agent/Advertising/Arts Administration
- Costume Designer/Lighting Technician/Make-up Artist/Prop Maker/Scriptwriter/Set Designer/Stage Manager/Director/Wardrobe Assistant
- Live Music Producer/Audio-visual Technician/Broadcast Engineer/Cinematographer/Sound Engineer/Video Editor

No Exams – Just Creativity

This course is **entirely coursework-based**—no exams! You'll complete **five pieces of coursework**, two of which are **core assignments**:

1. Career Exploration Project – Dive deep into the professional world of performing arts, researching roles such as actor, musician, dancer, producer, technician, director, or music therapist.
2. Extended Creative Response – Receive a brief and craft a performance or production as a musician, actor, or dancer.

Tailor Your Learning

Choose three additional coursework units from a wide range of specialized options, including:

Music: Popular Music Analysis, Songwriting & Composition, Vocal Techniques, Acting Through Song, Music for Film & TV, Digital Music & Sequencing, Ensemble Music Performance

Dance: Choreography & Dance Technique, Global Dance Styles, Jazz Dance for Musical Theatre, Dance on Camera, Rhythm & Tap, Ensemble Dance Performance, Dance Audition Preparation

Acting: Acting for Camera, Voice Over Acting, Scriptwriting & Improvisation, Comedy Drama in Performance, Physical Theatre, Ancient Greek & Roman Theatre, Contemporary Theatre

This program is your gateway to professional artistry, industry connections, and hands-on creative development. Whether you're looking to perform, create, or shape the performing arts landscape, this Sixth Form course empowers you to achieve your dreams.

Are you ready to take centre stage?



A-Level Photography

How will I be assessed? Students are assessed at the end of the two-years through an examination which accounts for 40% of the qualification and a 60% coursework unit based on a personal investigation study of the student's own choosing.

How it is assessed

Component 1: A portfolio that in total shows explicit coverage of the four assessment objectives. It must include a sustained project evidencing the journey from initial engagement to the realisation of intentions and a selection of further work undertaken during the student's course of study.

Component 2: Students respond to their chosen starting point from an externally set assignment paper relating to their subject title, evidencing coverage of all four assessment objectives. This extended creative response must explicitly evidence students' ability to draw together different areas of knowledge, skill and understanding from an initial selected starting point through to their realisation of intentions in the 15 hours of supervised time.

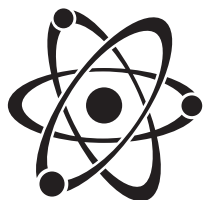
- 96 marks for both components.
- 60% of GCE.

Non-exam assessment (NEA) set and marked by the school/college and moderated by AQA during a visit. Moderation will normally take place in June.

What will I study? What future pathways are available?

Students who study photography can continue to study photography at university. An example of just some of the careers within the art and design industry are photo journalism, fashion photographers, filmmaker, designers, web design, gallery curator, art educator, teacher.





A-Level Physics

Physics A-Level is one of the most universally accepted qualifications for progression to university. The course content covers the basis of how things work, from the constituent parts of atoms out to the extent of the universe. You will integrate the concepts studied with a range of practical experiments throughout each topic giving the course both an academic and practical focus. You will learn to apply your knowledge of the key concepts to solve problems in a range of different contexts and applications.

Key features

- OCR Physics A is a well-established course built on many years of experience, covering the knowledge and understanding necessary to progress to STEM degrees and careers.
- Incorporates both Astrophysics and Medical Imaging.
- Physics is one of the top three A-Levels in terms of eligibility for degree entry qualification.

Content Overview	Assessment Overview	
<p>Content is split into six modules:</p> <ul style="list-style-type: none">• Module 1. Development of Practical Skills.• Module 2. Foundations in Physics.• Module 3. Forces and Motion.• Module 4. Electrons, Waves and Photons.• Module 5. Newtonian World and Astrophysics.• Module 6. Particles and Medical Physics.	Modeling Physics 100 marks 2 hours 15 minutes written paper	37% of total A-Level
	Exploring Physics 100 marks 2 hours 15 minutes written paper	37% of total A-Level
	Unified Physics 70 marks 1 hour 30 minutes written paper	26% of total A-Level
	Practical Endorsement in Physics	Reported separately

Career/real world

Industries employing physicists are varied and include:

- Aerospace and defence.
- Education.
- Energy and renewable energy.
- Engineering.
- Health and medicine.
- Instrumentation.
- Manufacturing.
- Meteorology and climate change.
- Nanotechnology.
- Oil and gas.
- Science and telecommunications.



Sport Studies Extended Certificate

How will I be assessed?

Students are assessed through examinations and coursework. The exams will be held at the end of Year 1 and coursework focus is for Year 2. There are four units to be completed which is equal to one A-Level.

Mandatory units

- Unit 1: Anatomy and Physiology (external exam).
- Unit 2: Fitness Training and Programming for Health, Sport and Well Being (external assessment).
- Unit 3: Professional Development in the Sports Industry.

Optional unit

- Unit 4: Sports Leadership.

Unit 1: Anatomy and Physiology: aims to cement how the skeletal, muscular, cardiovascular and respiratory systems function and the fundamentals of the energy systems.

This unit is assessed via a 1.5 hour examination.

Unit 2: Fitness Training and Programming for Health, Sport and Well Being: combines lifestyle factors affecting health, nutrition, fitness training and fitness programming, which is then assessed through task-based external two-hour examination.

Unit 3: Professional Development in the sports Industry: learners will research different possible careers and associated job roles in the sports industry. This unit is assessed internally.

Unit 4: Sports Leadership: aims to develop learners' confidence in a variety of different roles when leading sport. Learners need to be willing to stand in front of a group to develop this area. This unit is assessed internally.

Career/real world

Students who study sport can continue to study many areas at university. An example of just some of the careers within the sport, exercise science and technology, sports business and leisure management, sport development, leadership and coaching, outdoor education, fitness instruction and performance.



Edexcel Functional Skills

Level 2 English

This course is available to students who had below A-Level 3 at GCSE English. The Level 2 Functional Skills is in three sections: reading, writing and speaking, listening and communicating. All three sections need to be passed to pass the whole qualification. The assessments can be done online or on paper.

The course is designed to use texts that would be read in the real world such as leaflets, newspaper articles etc. Some of the questions are multiple choice, some short answer and some medium length. The writing tasks are all practical pieces such as writing an email of complaint. The assessment of spelling, punctuation and grammar are especially important in this section and worth 42% of the mark. As a result of this, lessons will begin with a clear focus on these skills. The spoken element consists of giving a talk and a question and answer session.

- Reading is assessed through a 75 minute examination and is based on three non-fiction texts.
- Writing assessment is based on a 60 minute examination where two tasks are completed in a specific format for a particular audience. Accuracy is especially important.
- Speaking, listening and communication is internally assessed and the whole assessment will be between 15 and 25 minutes.
- Each component can be retaken.

This qualification is a great springboard to further education or GCSE English.

Career/real world

This is a qualification that allows you onto many further education courses and apprenticeships. English qualifications are vital to virtually all career options you may choose. The Functional Skills course is aimed at written, spoken and reading in real world contexts which apply to all walks of life.





GCSE English Language

This course will give you an opportunity to retake your English Language GCSE. You will have assigned lessons to guide you through the reading and writing sections of the exam. You will have specific sessions working through exam technique, analysis of text, transactional writing and narrative writing. There will be opportunities for you to sit the GCSE exam in November and the summer.

Language Component 1: 40% of GCSE

Section A (20%): reading (40 marks): This section will test you through a range of questions about an unseen extract from a 20th century literature extract. You will need to analyse language, relationships and evaluate texts. You will practice these skills in lessons and be presented with a range of texts prior to your exam. You will need to select and retrieve information, analyse quotes and form opinions.

Section B (20%): writing (40 marks): You will need to write a narrative with a choice of four options of titles. This should be a narrative or a recount. You will be taught how to use language effectively, how to structure a story and how to make believable characters.

Language Component 2: 60% of GCSE

Section A (30%): reading (40 marks): This section will test you through a range of questions about two unseen non-fiction texts. One will be from the 19th century and one will be from the 21st century. You will need to analyse language, comment on texts and their purpose and select and retrieve information. You will be asked to synthesise information between texts and compare and contrast viewpoints, use of language and effect.

Section B (30%): writing (40 marks): You will need to write two transactional writing tasks. The options will be: a letter, a report, a review, a leaflet/guide, an article or a speech. You will learn how to write in different formats and styles, how to write persuasively and use language for precise purposes. You will learn how to use punctuation correctly and how to engage a reader.

Career/real world

You need an English qualification for most jobs, educational courses and apprenticeships. It is important to be able to communicate effectively and express yourself clearly. Reading and writing with sophistication and style is a sure fire way to get noticed and get your job application to the top of the pile.



Edexcel Functional Skills

Level 2 Mathematics

Functional Skills qualifications provide reliable evidence of a learner's achievements against demanding content that is relevant to the workplace. The qualifications assess learners' underpinning subject knowledge and their ability to apply this knowledge to different contexts. They provide a foundation for progression to employment and further technical education, and they help learners to develop skills for everyday life. The Pearson Edexcel Functional Skills Qualification in Mathematics at Level 2 consists of one externally assessed assessment. Each assessment comprises two sections – a non-calculator section (calculator prohibited) and a calculator section (calculator permitted).

Assessment structure	Duration	Number of marks	Percentage of qualification
Section A: Non-Calculator	25 minutes	16	25%
Section B: Calculator	1 hour 30 minutes	48	75%
Content areas			
Using numbers and the number system – whole numbers, fractions, decimals and percentages			
Using common measures, shapes and space			
Handling information and data			

The assessments are available as paper-based and onscreen, on-demand assessment. Section A and Section B are presented as separate question and answer booklets and must be taken in the same examination session.

Career/real world

Learners who achieve the Pearson Edexcel Functional Skills Qualification in Mathematics at Levels 1 and 2 can progress to further mandatory mathematical study, such as GCSE, the workplace or further vocational study.



GCSE Mathematics

Pearson Edexcel Level 1/Level 2 GCSE (9 - 1) in Mathematics (1MA1)

The aims and objectives of the Pearson Edexcel Level 1/Level 2 GCSE (9–1) in

Mathematics are to enable students to:

- Develop fluent knowledge, skills and understanding of mathematical methods and concepts.
- Acquire, select and apply mathematical techniques to solve problems.
- Reason mathematically, make deductions and inferences, and draw conclusions.
- Comprehend, interpret and communicate mathematical information in a variety of forms appropriate to the information and context.

Tier	Topic area	Weighting
Foundation	Number	22–28%
	Algebra	17–23%
	Ratio, Proportion and Rates of change	22–28%
	Geometry and Measures	12–18%
	Statistics and Probability	12–18%
Higher	Number	12–18%
	Algebra	27–33%
	Ratio, Proportion and Rates of change	17–23%
	Geometry and Measures	17–23%
	Statistics and Probability	12–18%

Career/real world

The course provides a strong foundation for further academic and vocational study and for employment, to give students the appropriate mathematical skills, knowledge and understanding to help them progress to a full range of courses in further and higher education. This includes Level 3 mathematics courses as well as Level 3 and undergraduate courses in other disciplines such as biology, geography and psychology, where the understanding and application of mathematics is crucial.

OBA Scholars

Students achieving high GCSE results at grades 9-7 or A*- A, have a number of opportunities available to them. Every year the Academy sends a strong cohort of students to university including, Russell Group universities. We support the progress of students in the following ways:

- Liverpool Scholars which sees students receive both a cost and grade offer reduction to the University of Liverpool.
- Individualised tuition in chosen subjects.
- Access to gifted and talented university programmes.
- Links to the Sutton Trust which promotes social mobility through education.
- An association with the Nuffield Bursary which provides financial assistance for students considering a medical degree.
- Demonstration of key skills for university by undertaking the Extended Project Qualification (EPQ).

Students who wish to apply to Oxford or Cambridge will be given extra support and advice with their application from their pastoral form tutor. Expert professionals from the Ormiston Academies Trust (OAT) will also assist in this process.



Support

Pastoral

Life in Sixth Form is both exciting and challenging. While it's vital you develop both your independent living and study skills we recognise that sometimes a little extra help is necessary. You will be given a personal tutor who can help you settle into Sixth Form quickly. They will be with you throughout your journey at OBA and will be your first port of call for all queries and concerns you have, offering the following:

- Delivery of tutor programme to support a variety of areas relevant to your age group including; personal health and well-being, employment and careers, money and finance.
- Support, advice and guidance on your future and your well-being.
- Reviews of your academic progress and attendance.
- Setting of action plans.
- Parental support where necessary.

Destinations

Every year we proud to see many Year 13 students be offered places at a wide range of Universities across the country, including in those many Russell group locations. As an Academy we are able to offer extensive support and advice as students move through this process. This includes:

- Personal statement workshops.
- UCAS application clinics.
- Student Finance evenings to support parents/carers with applications.
- Accommodation advice.
- Scholarship workshops.

This support is also available to students who are interested in applying for Apprenticeships. We have seen many students go off into apprenticeships at all levels, helping to create professional relationships with local companies. The support that is offered here includes; Apprenticeship Open Days, In-house career days, CV and cover letter workshops, Mock Interview prep including presentation prep and Regular job advert updates.



Step to A-Level Programme

The Transition from GCSE to A-Level/Level 3 Courses

Rationale for students

The move from GCSE to A-Level/Level 3 courses can be daunting and it presents some different challenges than you might have experienced before. Here at OBA we want to support you through this transition as you embark on your Sixth Form career.

The content at A-

3 is much broader than what you will have covered at GCSE and there is a need for much more independent studying both in school and at home. The Bridging the Gap programme has been developed in order to support you through this changeover and prepare you for your courses in Year 12.

- Get a head start on your courses.
- Gain an insight into work that you will be undertaking in September.
- Understand the type of learning that you will be expected to complete independently.

You will receive Bridging the Gap resources from each of the subjects you have chosen that has been designed to prepare you for studying in September. It is important that you complete this work over the summer in order to make the best possible start to your courses in Sixth Form.

Stage 1	Stage 2	Stage 3
<p>Students receive Bridging the Gap resources and complete the work over the summer.</p> <p><i>Resources are made accessible to support the transition from GCSE level of work to Level 3/A-Level. This will consist of work packs and/or google classrooms.</i></p>	<p>Induction Day - Bridging the Gap workshop.</p> <p><i>Tutor Programme will continue to develop study skills and practice learning habits that will positively impact course studies</i></p>	<p>Baseline assessment in each subject in September.</p> <p><i>Completed in the first 4 weeks of the course based on the content of the bridging the gap work.</i></p> <p><i>This enables subject leaders to identify students' strengths and areas for development and make informed planning and intervention choices.</i></p> <p><i>The aim of this is to support the students as well as ensuring they are on the most suitable course and realistically going to be successful.</i></p>

Enrichment/Leadership activities at OBA Sixth Form.

Alongside your chosen courses you are required to select a minimum of one enrichment or leadership activity. This activity will be scheduled outside of your lesson time and should enable you to develop a variety of transferable skills that employers and universities are looking for from their applicants.

EPQ Extended Project Qualification (*equivalent to ½ an A-Level*)

The EPQ is a course widely recognised by all universities as a prestigious qualification which equips students with key academic skills required in higher education settings. You will not only become an effective researcher, but you will also be able to navigate your way through an independent project. It can be focused on a topic of your choice, and you have the option of either producing a university style dissertation or an artefact. Artefacts can be anything from a piece of creative writing to a drama production or even organising a sports event. This qualification can lead to reduced offers from university courses due to the demands of undertaking your own project

Core maths

The aim of the Level 3 Certificate Mathematical Studies qualification is to support students and prepare them for the mathematical demands of their A-Levels where there is a distinct mathematical or statistical element, such as Biology, Physics, Psychology, Economics, Business Studies and Computing.

We aim to consolidate students' mathematical understanding, build their confidence and competence in applying mathematical techniques to solve a range of problems and to introduce them to new techniques and concepts that will prepare them for future employment within a broad range of academic, professional and technical fields. It is the equivalent to ½ an A-Level and can earn both UCAS points and a reduced grade offer for some university courses.

Fitness

This enrichment activity will be scheduled 1 hour per week in the school gym sports hall. During this enrichment students will benefit from working on their own personal fitness using a variety of different gym equipment and working on different area of the body weekly. Students will be required to wear appropriate gym clothing.

Football

This enrichment activity will be scheduled 1 hour per week on the 3G pitches. During this enrichment students will either be training for upcoming fixtures or will be competing in football fixtures for the different leagues they have been entered for. Students will develop their teamworking ability throughout this enrichment. Students will be required to wear appropriate sports clothing and Sixth Form football kit for matches.

Lunch Duties (*includes a free lunch*)

This leadership activity will involve students acting as duty staff during lunch time for lower year groups. Students will be required to ensure all slower school students are following the whole school policies whilst in the canteen, on the yard or at the toilets. Students will be supported in challenging any poor behaviour from lower school students. This activity will develop students' leadership, communication, and interpersonal skills.

Duke of Edinburgh Gold Award

This enrichment and leadership activity will involve students completing 4 elements of an award to achieve their Duke of Edinburgh Gold Award. Students will be required to:

- Volunteer 1 hour per week for 12 months.
- Perform a physical activity 1 hour per week for 12 months.
- Develop a skill for 1 hour per week for 12 months.
- Plan and complete practice and final expedition.

This activity will develop a variety of skills including, leadership, teamwork, communication, and organisation.

Subject Support

This leadership activity will involve students working 1 hour per week within one of their chosen subjects to support lower school students. This will require students to support during lower school lesson time, by working closely with the students within that class and following the direction of the teacher they are supporting. This activity will enable students to embed their subject knowledge further whilst also developing their leadership.

Reading support

This leadership activity will involve students supporting in library lessons with our librarian. This can also be done during specific lunch times to enable lower school students the opportunity to gain further support with their reading ability and support them in developing a love for reading. This will help students develop skills such as communication and interpersonal.

Sixth Form Leadership Team

This leadership and enrichment activity will involve you being a member of the Sixth Form Leadership Team. As part of your responsibility for this you will work alongside the Assistant Principal for Personal Development and the lower school student parliament. This activity will involve regular meetings and independent tasks to ensure you drive improvement within your area. Within the leadership team there will be a variety of roles including:

- Charity ambassador
- School improvement ambassador
- Literacy ambassador
- Numeracy ambassador
- Anti-bullying ambassador
- Mental health ambassador
- LBGTQ+ ambassador

This activity will allow students to develop a variety of skills including organisation, teamworking, interpersonal, leadership and communication.

Music lessons (*charged - £4 per session*)

This enrichment activity will allow students to develop a skill with a particular instrument. This activity will need to have a small charge on it to pay for the external peripatetic teachers to come in and deliver the session. Students will be able to focus on and enjoy learning a new skill during this time. Available lessons in the following instruments:

- Piano
- Guitar
- Bass
- Singing
- DJing
- Drums
- Woodwind

Sign Language

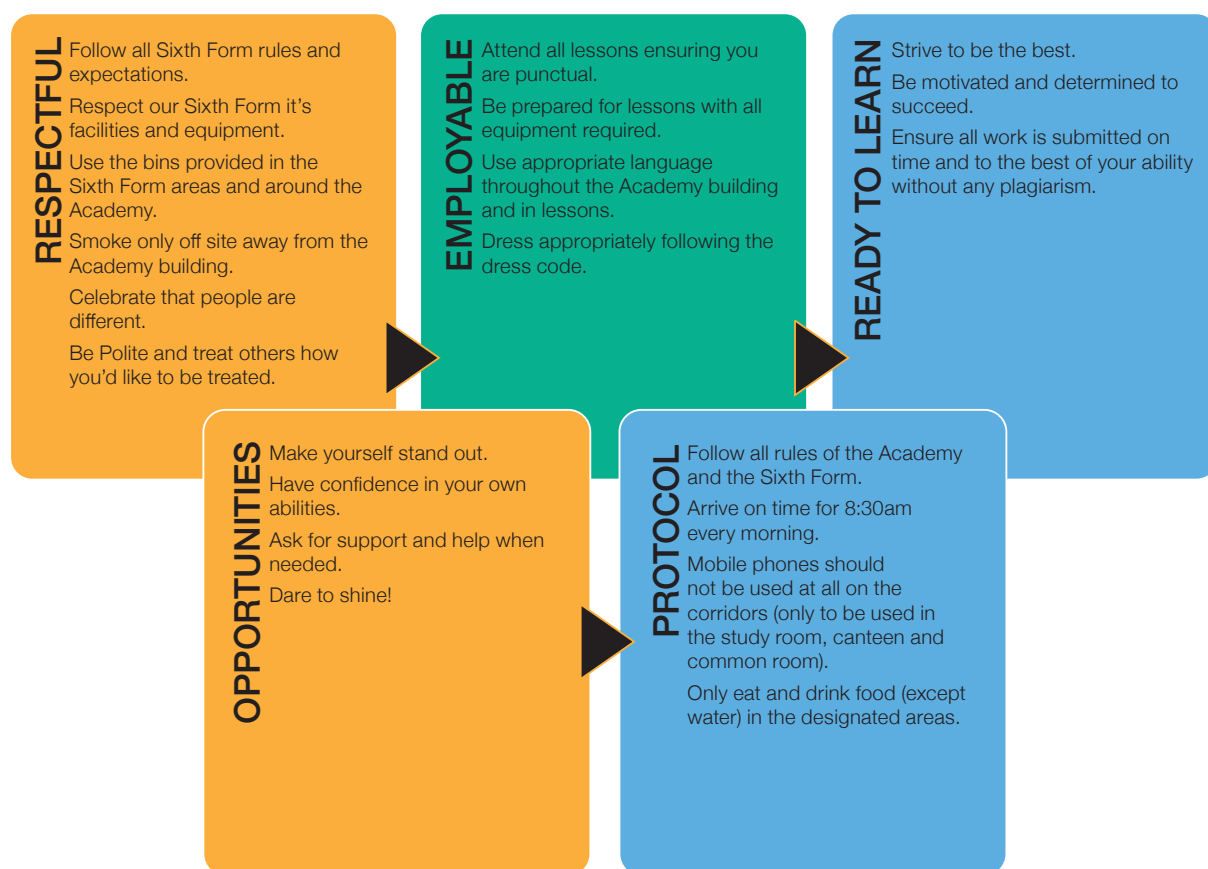
This enrichment activity will enable students to develop the basics in British Sign Language. Students will complete this activity for 1 hour per week and will support them in gaining a Level 1 qualification in BSL.

Work Experience

Throughout your time at the Sixth Form you will be provided with the opportunity to complete a full week's work experience during Year 12. This will allow you to develop a variety of employability skills to support you with your future career ambitions. This process is also coupled with mock interviews to enable students within the Sixth Form to develop their confidence in interviewing technique as well as visits to local businesses and universities.

OBA Sixth Form Expectations

At OBA Sixth Form we have high expectations of all of our students. When joining the Sixth Form you will be seen as role model by the lower school students, therefore how you conduct yourself with regards to, attendance, punctuality, behaviour and dress is of the utmost importance. Following the expatiations and outlines set out in the chart on the following page will enable you to be a successful student with us at the Sixth Form.



I understand that breaking the following rules will result in swift disciplinary action which may mean that I am asked to leave Sixth Form:

- Do not bring alcohol or illegal substances into Sixth Form, or be under the influence of these while in Sixth Form or taking part in external activities.
- Do not bring knives, or anything which could be used as an offensive weapon into Sixth Form or on transport.
- Do not fight, be aggressive, bully, harass, threaten or intimidate others in any way. This includes the use of social networking sites, emails, texts and phone calls.

For more details on student expectations, dress code, attendance and behaviour policies please access <https://tinyurl.com/OBA6thformexpectations>.

How to Apply

- Complete an online application by visiting 'applying to Sixth Form' in the Sixth Form section of the Academy website.
- You can also contact one of the Sixth Form team on **01928 711 643**.
- You will have an individual course consultation during which provisional care will be agreed.
- You must meet the entry grade requirements of both the whole school and subjects which you have specifically chosen to be guaranteed a place.
- You will need to complete and return a reference request form ensuring that it has been signed by a member of staff from your previous school.
- You will hold a final meeting with a member of the Sixth Form team after you have received your GCSE results in which both your place at the Sixth Form college and course choice will be confirmed.







Barnfield Avenue, Murdishaw, Runcorn WA7 6EP

Tel: 01928 711 643

Email: admin@ob-ac.co.uk

Web: www.ormistonbolingbrokeacademy.co.uk

Follow us on Twitter and Instagram @OBA6thForm

[OAT]
Ormiston Academies Trust
AN OAT ACADEMY