

KS5 A Level Psychology Learning Journey



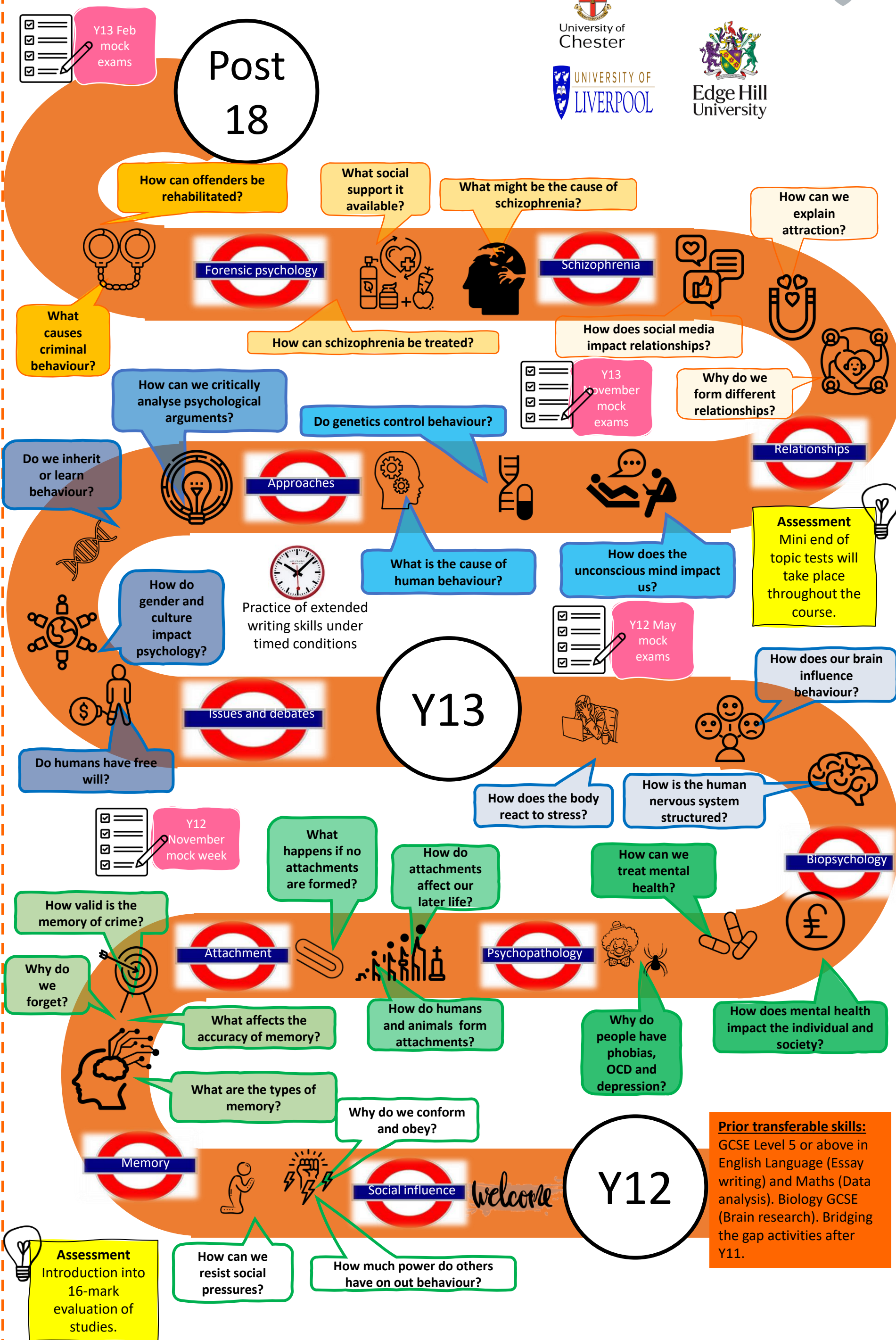
Want to study human behaviour?

What to find out more about what makes people 'tick' and how to support people's wellbeing? Then studying psychology (the scientific study of the mind and behaviour) is for you!



Throughout this course we will draw on **research methods** to investigate study design, ethical considerations and data analysis. This is an integral part of psychology and skills we be embedded throughout each module of study.

Synoptic Links



Assessment objectives
 AO1 – Knowledge and understanding
 AO2 – Application
 AO3 – Analysis and evaluation

AQA A Level Psychology (7182) content to be delivered:
 Paper 1 Introductory Topics in Psychology
 Paper 2 Psychology in Context
 Paper 3 Issues and Options in Psychology

Prior transferable skills:
 GCSE Level 5 or above in English Language (Essay writing) and Maths (Data analysis). Biology GCSE (Brain research). Bridging the gap activities after Y11.